



Kitchen's Crane & Equipment
www.KitchensEquipment.com

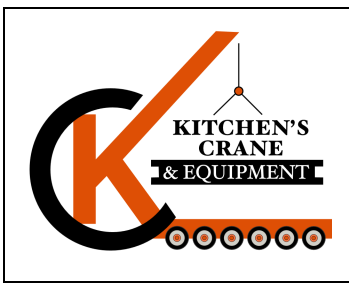


1985 +/- Lift System TwinLift – 50-ton Capacity

- 6-cylinder, 125 hp engine
- Hydrostatic drive system
- Planetary steering w/ 90 degree / 360-degree rotation
- Twin Power booms to 26' plus 10' manual boom section
- Telescopic Cwt. to 5' for enhanced load chart
- Cwt. A - Basic Fixed
- Cwt. B, C & D Removeable (B-14,600 / C-8,450 / D- 8,050 lbs.)
- Drive Protection Steel Guard
- Press-on polyurethane wheels @ 22" Diameter / 12' Width
- Fuel - Diesel
- With Fuel exhaust scrubber
- All counterweights sections are included

Kitchen's Crane & Equipment / Est. 2007

Heavy-Lift & Transport Equipment Sales, Rentals & Asset Disposition Solutions



Kitchen's Crane & Equipment
www.KitchensEquipment.com

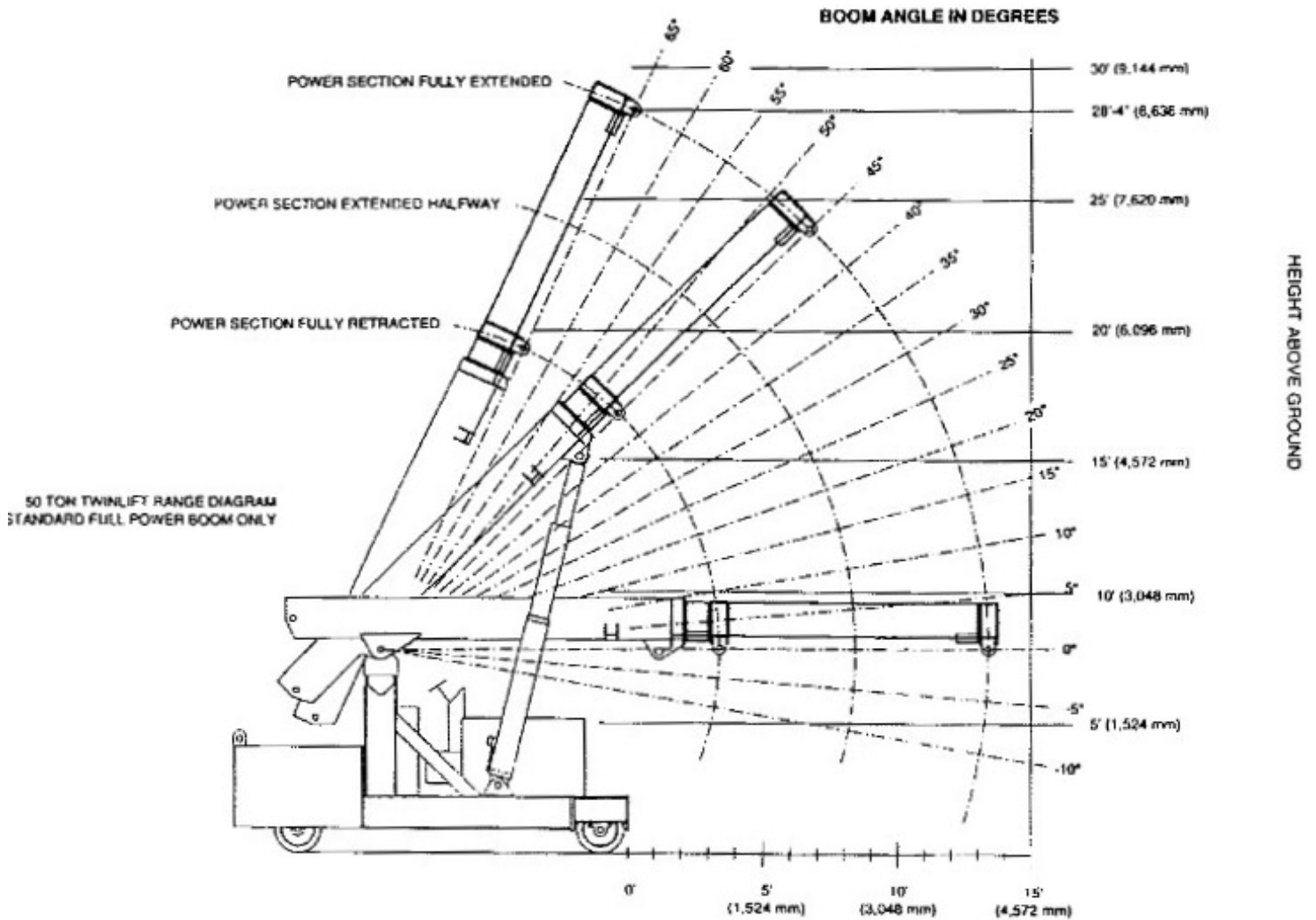


Kitchen's Crane & Equipment / Est. 2007

Heavy-Lift & Transport Equipment Sales, Rentals & Asset Disposition Solutions

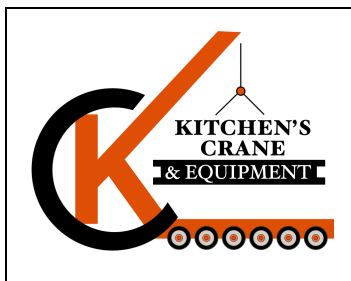


Kitchen's Crane & Equipment
www.KitchensEquipment.com



Kitchen's Crane & Equipment / Est. 2007

Heavy-Lift & Transport Equipment Sales, Rentals & Asset Disposition Solutions

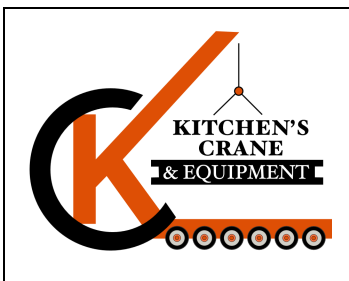


Kitchen's Crane & Equipment
www.KitchensEquipment.com

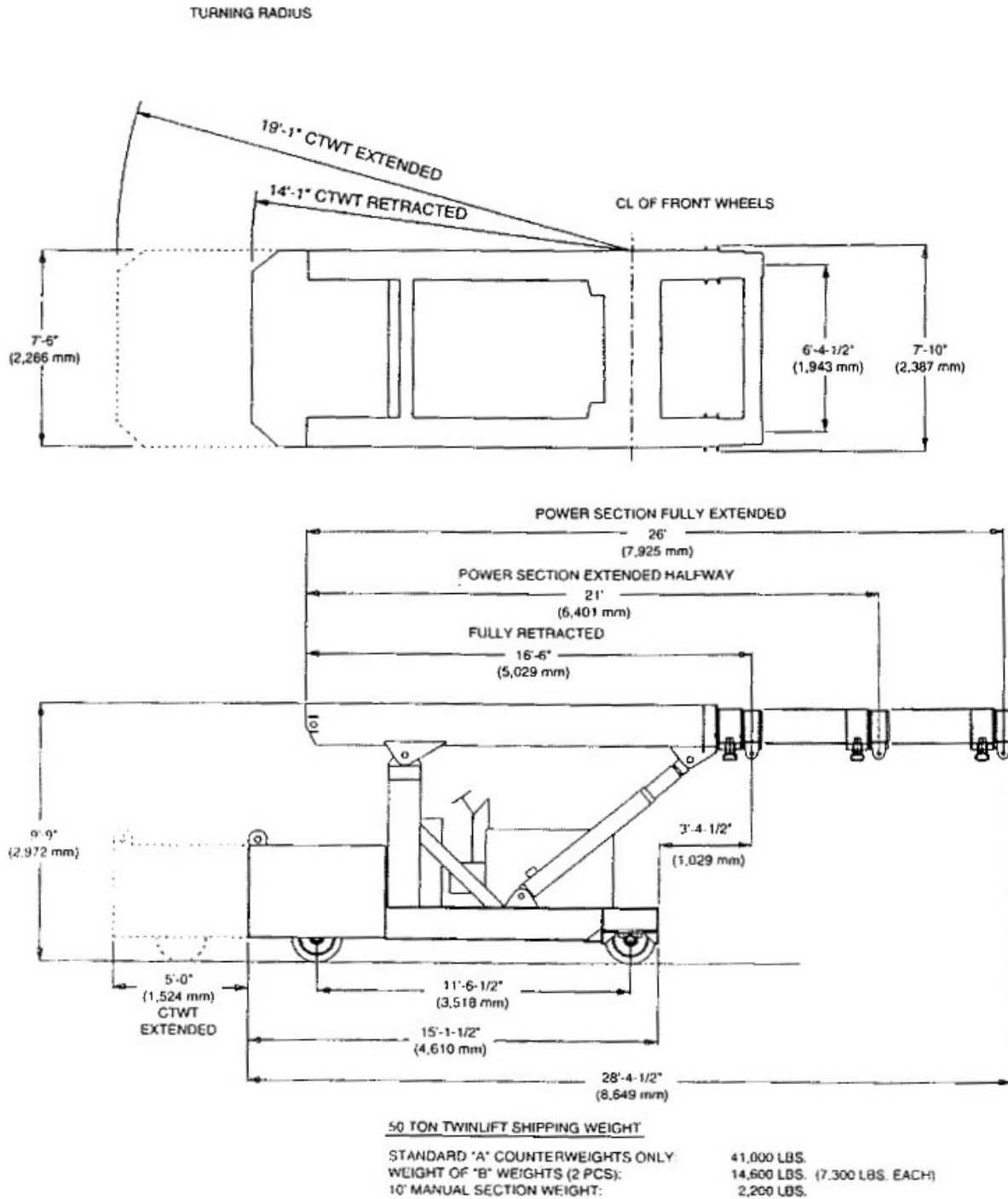
LOAD DISTANCE IN FEET FROM FRONT	50 TON TWINLIFT																TLLC00			
	EXTENDED 0 FEET								COUNTERWEIGHT STANDARD NON REMOVABLE CTWT								REV.B			
	EXTENDED 5 FEET								EXTENDED 5 FEET								12/7/92			
	LOADED BOOM ANGLE Δ°	BOOM LENGTH IN FEET				10' MANUAL SECTION SEE NOTES				LOADED BOOM ANGLE Δ°	BOOM LENGTH IN FEET				10' MANUAL SECTION SEE NOTES					
	16'6"	Δ°	21'	Δ°	26'	Δ°	31'	Δ°	36'		16'6"	Δ°	21'	Δ°	26'	Δ°	31'	Δ°	36'	
0	42	100,000	57	100,000	65	100,000				42	100,000	57	100,000	65	100,000					
1	35	100,000	53	100,000	62	100,000				35	100,000	53	100,000	62	100,000					
2	28	72,500	48	70,200	59	68,600	65	59,300		28	74,800	48	62,500	59	61,800	65	51,700			
3	13	53,600	44	51,700	56	50,600	63	51,000		13	79,400	44	68,500	56	67,400	63	67,900			
4	SEE NOTE D		40	40,500	53	38,600	60	40,000	55	40,300	SEE NOTE D		40	54,100	53	53,100	60	53,500	65	53,600
5		34	33,200	49	32,300	58	32,800	63	32,900		34	44,400	49	43,600	58	43,900	63	44,100		
6		28	27,800	46	27,000	55	27,300	61	27,600		28	37,500	46	36,700	55	37,000	61	37,200		
7		20	23,800	42	23,100	53	23,400	59	23,600		20	32,300	42	31,500	53	31,800	59	32,000		
8		6	20,700	38	20,000	50	20,300	57	20,500		6	28,300	38	27,500	50	27,800	57	28,000		
9				34	17,600	47	17,800	55	18,000				34	24,200	47	24,600	55	24,800		
10				29	15,500	44	15,800	53	15,900				29	21,700	44	21,900	53	22,100		
11				23	13,900	41	14,100	51	14,300				23	19,500	41	19,700	51	19,900		
12				16	12,400	38	12,700	48	12,800				16	17,700	38	17,900	48	18,000		
13						34	11,400	46	11,600					34	16,300	46	16,400			
14						31	10,400	43	10,500					31	14,900	43	15,000			
15						26	9,400	41	9,600					26	13,700	41	13,800			
16						21	8,600	38	8,800					21	12,600	38	12,700			
17						14	7,900	35	8,000					14	11,700	35	11,800			
18	NOTES: A) ALL RATINGS ABOVE THE BOLD LINE ARE BASED ON STRUCTURAL COMPETENCE AND NOT ON MACHINE STABILITY (TIPPING CONDITIONS). B) MANUAL SECTION CAPACITIES ARE LIMITED BY ANGLE. DO NOT USE RADIUS WHEN USING MANUAL SECTION. C) ALL CAPACITIES ARE IN POUNDS. D) TELESCOPE CYLINDER MUST BE FULLY RETRACTED AND AGAINST STOPS. E) BOOM LENGTH IS FROM REAR OF BOOM TO CENTER OF LIFT EYE.																32	10,900		
19																	28	10,200		
20																	24	9,500		
21																	19	8,800		
22																	13	8,300		

Kitchen's Crane & Equipment / Est. 2007

Heavy-Lift & Transport Equipment Sales, Rentals & Asset Disposition Solutions



Kitchen's Crane & Equipment
www.KitchensEquipment.com



Kitchen's Crane & Equipment / Est. 2007

Heavy-Lift & Transport Equipment Sales, Rentals & Asset Disposition Solutions