



KITCHEN'S CRANE & EQUIPMENT

FOR RENT: LIFT SYSTEMS 75-TON MOBILIFT

LONG OR SHORT TERM RENTALS AVAILABLE

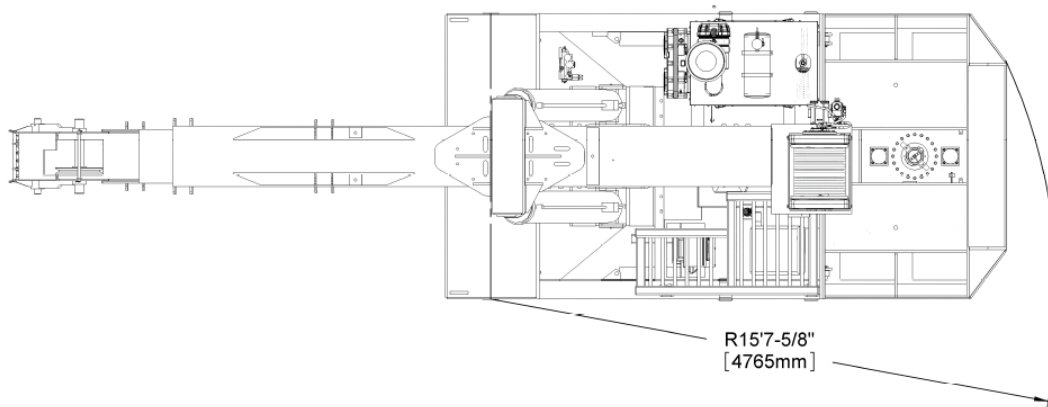
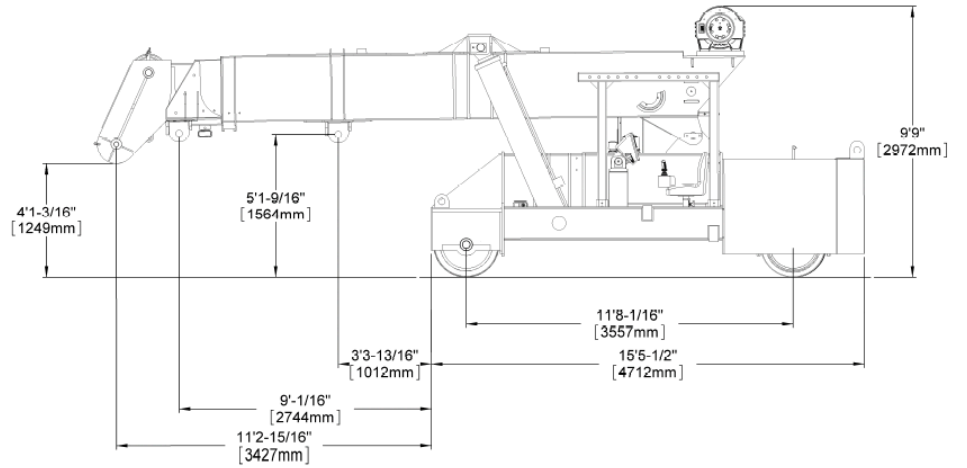
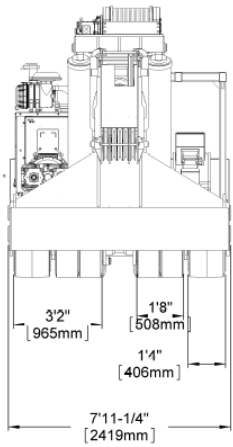
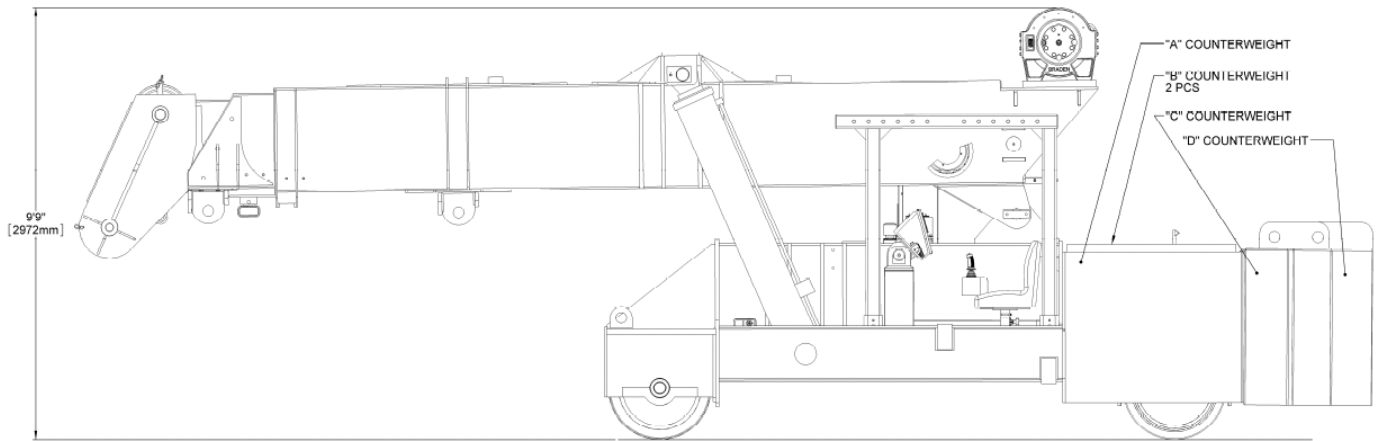
- 75 Ton Capacity
- Cummins Engine: QSB3.3P – 108 HP
- Sundstrand 90 Series Drive Pump
- CARL (Computer Assisted Remote Lifting) Control System
- Separate Controls for each function. Combination of foot pedal, joystick, and push button controls allows for multiple functions at the same time.
- Poclain MK24 drive motors – (2) in front and (1) in steering box.
- (4) 28" front wheels, (2) 28" rear wheels
- High strength three section telescopic boom powers first section and manually extended second section.
- (1) lifting eye centrally located on main boom and (1) lifting eye located on power boom, both with 75-ton capacity
- Weight: 48,000 lbs., standard "A" counterweight included

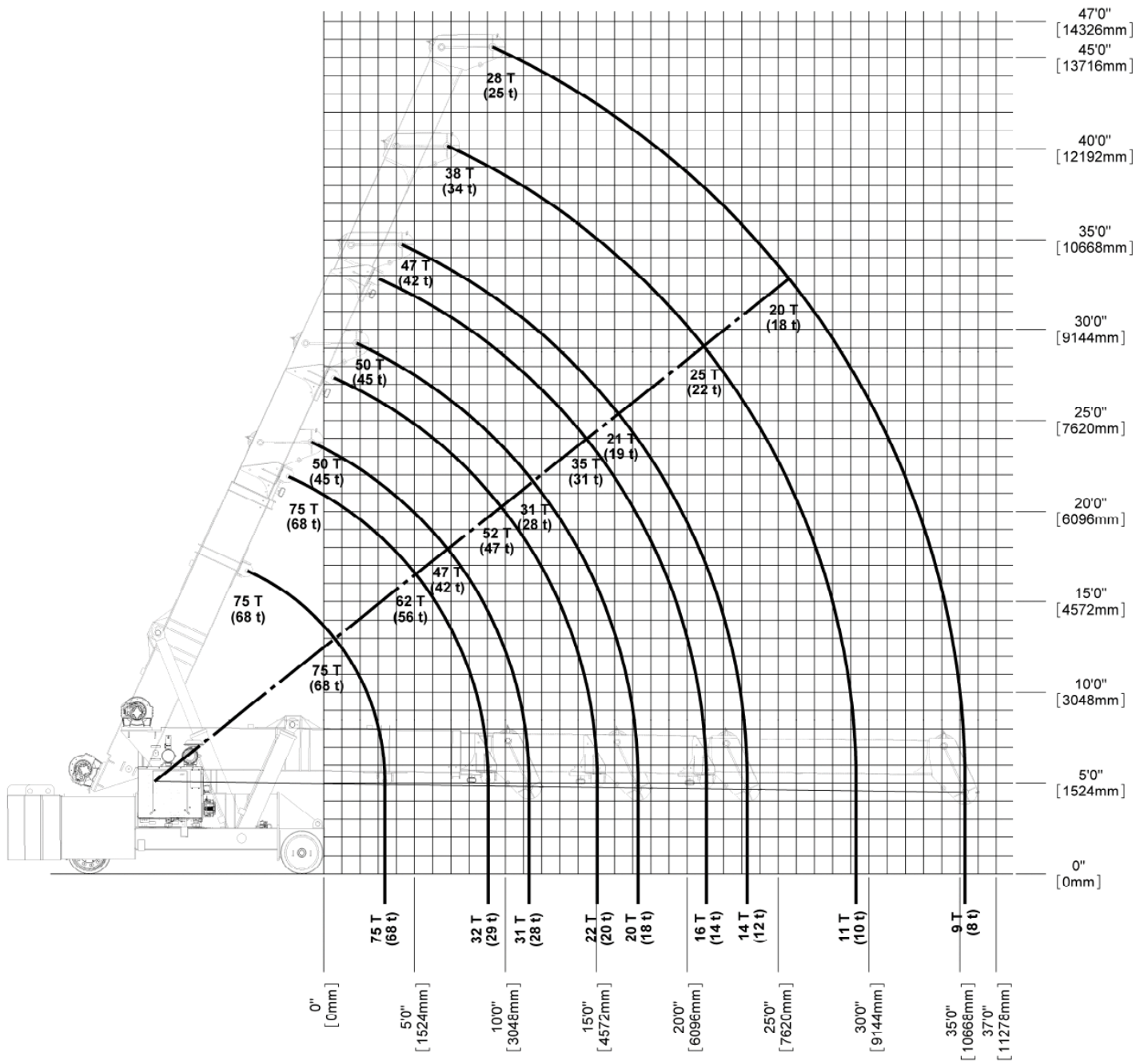
Additional information available upon request.



7913 Dunnottar Court, Chesterfield, VA 23838
1-804-814-4844 info@KitchensEquipment.com
www.kitchensequipment.com







NOTE

1. The above chart is for reference purposes only.
2. Never use the above chart for lift planning calculations
3. Lift plan calculations are to be determined solely by the load charts and range diagrams that are issued for the specific serial numbered machine that is to be used for the specific planned lift.